

HOW TO START



WOLFX SIGNALS

ÍNDEX

1. HOW DO I START?.....	2
2. HOW TO FOLLOW OUR SIGNALS STEP BY STEP.....	3
3. HOW TO MANAGE TAKE-PROFITS.....	8
4. WHAT IS LEVERAGE?.....	9
5. FINAL RECOMMENDATIONS.....	10

The main objective of this PDF is **helping you maximize your profits by learning how to start from scratch, manage Take Profits, risk, leverage, and other key factors**. It is not our intention to explain deeply what the cryptocurrencies are, which factors affect changes in their prices, or any other aspect that is not 100% relevant when it comes to successfully following our signals. We will, however, start with a short introduction for you to follow everything we explain.

1. HOW DO I START?

Step 1: Download the following apps:

- Telegram (available in App Store and Play Store)
- Bybit or Binance (available in App Store and Play Store)

We recommend **Bybit** as the best platform to follow our crypto signals because of its low commissions and because it's available in most of the countries. Also, our members will have special conditions after signing up with Bybit.

Sign up using this link: <https://partner.bybit.com/b/wolfxsignals>, deposit \$10 or more and you will receive \$10 back + 100% maker fee discount. If you deposit \$1000 or more, you will receive \$100 back + 100% maker fee discount.

If you have issues, here you have "How to Register on the Bybit App":
<https://learn.bybit.com/bybit-guide/create-a-bybit-account/>

If you have issues, here you have "How to Register on Binance App":
<https://www.binance.com/en/support/faq/360042718372>.

Step 2.1: Deposit your funds in Bybit:

You have to deposit your money and then buy USDT in "Markets", since we are going to do all the operations with this pair. Finally, you must transfer the USDT from your Spot Account to the Derivatives Account, which is where we will operate.

Here you have a full guidance explaining how to deposit in Bybit: https://www.bybit.com/en-US/help-center/bybitHC_Article?language=en_US&id=000001119

Step 2.2: Deposit your funds in Binance:

You have to deposit your money and then buy USDT in "Markets", since we are going to do all the operations with this pair. Finally, you must transfer the USDT from your main wallet to the "USD (S) -M Futures" wallet, which is where we will operate (make sure you have activated your Binance Futures account).

- If you have issues, here you have "How to Deposit EUR and Fiat Currencies":

<https://www.binance.com/en/support/faq/e117b4c063534e5f93b735b980575000>.

- If you have issues, here you have “How to Transfer Funds to the Futures Wallet”: <https://www.binance.com/en/support/faq/360033773532>.

IMPORTANT RULES:

- If you see a signal that has already hit some take-profit, don't enter that signal. Wait until the next one.
- If a signal doesn't hit the entry zone in 24 hours after having shared the signal, the signal will be considered as NULL.

2. HOW TO FOLLOW OUR SIGNALS STEP BY STEP

Following our signals is **very easy**, but there are some things you must take into account if you want to do it successfully. It is vital that you keep your phone with the notifications of our channel activated, as you must enter your trades as soon as we send the signals.

THESE STEPS ARE TO FOLLOW OUR SIGNALS MANUALLY. IF YOU WANT TO USE AND CONFIGURE THE AUTO-TRADING TOOL 'CORNIX' THERE'S A PINNED MESSAGE IN THE VIP GROUP WITH ALL THE INFO.

- **Clarification:** To use the Auto Trading Bot, first you need to become a Vip Member.

The process is the following:

1. We send a signal to our telegram channel. It will look like this:

For this example, the *value 1* = 18.148 and *value 2* = 18.155

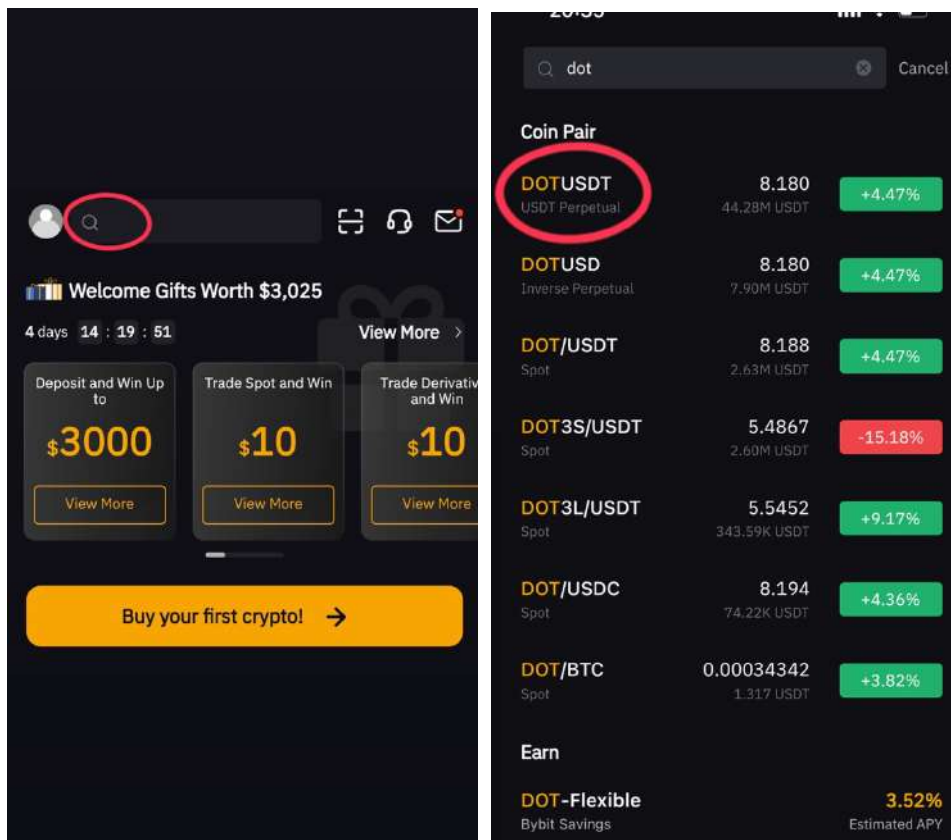


- As written in the last sentence, all our signals are STOP LIMIT.
- ❖ **ATTENTION:** In the Vip Group, instead of the sentence 'Entry zone: *value 1-value 2*' we will share the next sentence: 'Enter above: *value 1* (with a maximum value of *value 2*)' for BUY signals, and 'Enter below: *value 1* (with a minimum value of *value 2*)' for SELL signals.

It means the same, it's just a different format because if not the Auto-Trading bot (Cornix) doesn't read the signals properly.

2.1 How to follow our signals manually in BYBIT:

1. Open your Bybit App, and search the pair given:



2. Once you're in the pair, click the button Long (Buy) if it's a BUY signal or Short (Sell) if it's a SELL signal, depending on what we specify (in this case Buy):



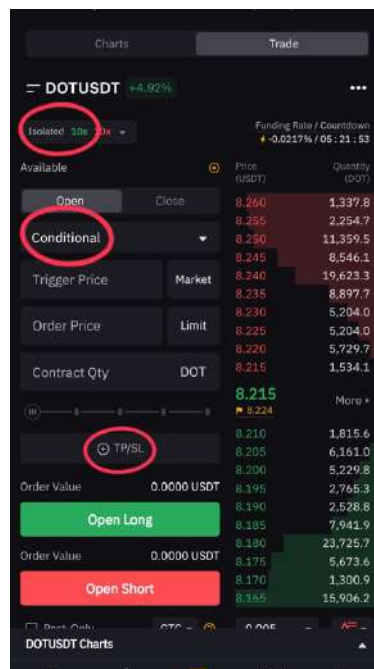
3. The last step. Make sure to use ISOLATED, in the first red circle you can change the leverage as well. Secondly, make sure to select the 'conditional' mode.

-In trigger price put the first value (*value 1*) of the interval (18.148).

-In order price put the second value (*value 2*) of the interval (18.155).

Then select the quantity you want to invest. And finally set the TP and SL value indicated in the signal.

Finally, click the button 'Open Long' if it's a BUY signal, or click the 'Open Short' button if it's a SELL signal.

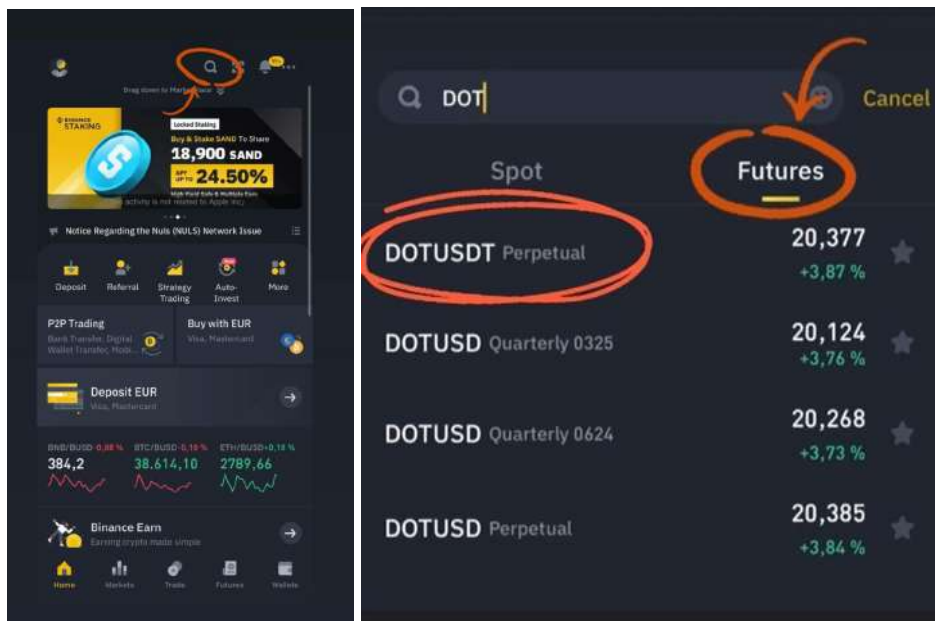


ATTENTION: If it's a SELL signal, you have to do the same. Place a Sell Signal, and place the (*value 1*) and (*value 2*) in the same positions as indicated before.

- ❖ If you're going to use more than 1 Take Profit (TP), open a trade for every take profit and maintain the same Stop Loss (SL). Before that, read the point 5 of the document where we explain 'How to manage Take-Profits'.

4.2 How to follow our signals manually in BINANCE:

1. Open your Binance App, and search the pair given:



Select the first option, DOTUSDT Perpetual.

2. Once you're in, click the button Buy or Sell, depending on what we specify (in this case Buy):



- The last step. Make sure to use ISOLATED, in the first red circle you can change the leverage as well. Secondly, make sure to select the 'stop limit' mode.

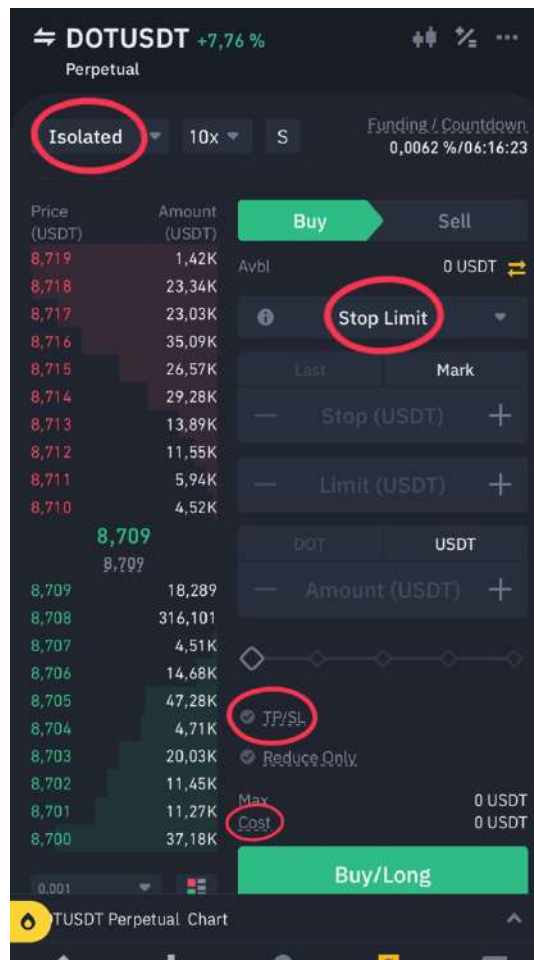
-In **Stop (USDT)** put the first value (*value 1*) of the interval (18.148).

-In **Limit (USDT)** put the second value (*value 2*) of the interval (18.155).

Then select the quantity you want to invest. And finally set the TP and SL value indicated in the signal.

- **IMPORTANT:** The amount you're investing is specified where it says **COST** (in this case, 100.34 USDT).

Finally, click the button 'Buy/Long'.



ATTENTION: If it's a SELL signal, you have to do the same. Place a Sell Signal, and place the (*value 1*) and (*value 2*) in the same positions as indicated before.

- ❖ If you're going to use more than 1 Take Profit (TP), open a trade for every take profit and maintain the same Stop Loss (SL). Before that, read the point 5 of the document where we explain 'How to manage Take-Profits'.

3. HOW TO MANAGE TAKE-PROFITS

The management of Take Profits depends on the level of risk you want to assume and the amount of money you have invested in your account. There are different strategies:

- **Strategy 1 - Risk level: Low**

In the long term it is the most profitable strategy, but it requires time and patience. The strategy is simple: Open 1 order with the Take-Profit 1 (TP1), with the 10% of your total funds.

Using the stats of January 2022 as an example to calculate profits, we shared 53 signals: 52 signals hit TP1 and the % of profits for TP1 is around 4%.

$$\text{➤ Profits TP1} = 52 * 4 = 208\% \quad \text{➤ Losses TP1} = 60 * 1 = 60\%$$

Total profits = 148% approx. per month

- **Strategy 2 - Risk level: Medium**

The strategy consists of opening 2 different trades in the following way:

-One trade setting the TP1 with the 50% of the funds you're going to invest in the signal.

-A second trade setting the TP2 with the other 50% of the funds earmarked for the signal.

So, if you have 1000\$ and you're using 100\$ per signal, 50\$ will go for TP1 and 50\$ will go for TP2.

Using the stats of January 2022 as an example to calculate profits, we shared 53 signals: 52 signals hit TP1 and 49 signals hit TP2. The % of profits for TP1 is around 4% and for TP2 is around 12%.

$$\text{➤ Profits TP1} = 52 * 4 = 208 / 2 = 104\% \quad \text{➤ Losses TP1} = 1 * 60 = 60 / 2 = 30\%$$

$$\text{➤ Profits TP2} = 49 * 12 = 588 / 2 = 294\% \quad \text{➤ Losses TP2} = 3 * 60 = 180 / 2 = 90\%$$

**We divide by 2 because there are two open orders per signal*

Total Profits = 278% approx. per month

- **Strategy 3 - Risk level: High**

The strategy consists of opening 3 different trades in the following way:

- One trade setting the TP1 with the 33.33% of the funds you're going to invest in the signal.
- A second trade setting the TP2 with the other 33.33% of the funds.
- A third trade setting the TP3 with the other 33.33%.

So, if you have 1000\$ and you're using 100\$ per signal, 33\$ will go for TP1, 33\$ for TP2 and 33\$ for TP3.

Using the stats of January 2022 as an example to calculate profits, we shared 53 signals: 52 signals hit TP1, 49 signals hit TP2 and 35 hit TP3. The % of profits for TP1 is around 4%, for TP2 is around 12% and for TP3 is 40%.

➤ **Profits TP1** = $52 * 4 = 208 / 3 = 69.33\%$ ➤ **Losses TP1** = $1 * 60 = 60 / 3 = 20\%$

➤ **Profits TP2** = $49 * 12 = 588 / 3 = 196\%$ ➤ **Losses TP2** = $3 * 60 = 180 / 3 = 60\%$

➤ **Profits TP3** = $35 * 40 = 1400 / 3 = 466.66\%$ ➤ **Losses TP3** = $18 * 60 = 1080 / 3 = 360\%$

**We divide by 3 because there are three open orders per signal*

Total profits = 478.66% approx. per month

RISK WARNING: You must take into account that the calculations made in the strategies explained above are not always the same every month, so you must carefully see and analyze which one best suits your level of risk.

4. WHAT IS LEVERAGE?

Imagine you want to buy a 100,000\$ house, so you go to the bank to take out a loan. The bank requires you to supply 20% of the value of the property as a down payment on the loan. The result is that, for 20,000\$, you can access a property valued in 100,000\$. This is an example of leverage in real estate. You have bought the house at a leverage of 5x (20,000 is 1/5 of 100,000).

One year later, the real estate market has appreciated by 10%, so your house is now valued in 110,000\$ and you decide to sell it. If you had not asked for a loan and you had paid for the entire house from the beginning (100,000\$), your profits of your initial investment would effectively be 10% (10,000\$). However, the fact that you only invested 20,000\$ and used the leverage, means that those 10,000\$ of house appreciation no longer represent only 10% of your

investment, but you will have made a much more profitable operation that will have given you a return of 50% (10,000\$ profits with an investment of 20,000\$, which coincides with the result of multiplying the theoretical profits-10% by your leverage-5x).

Now, let's apply this logic to a crypto trade. Imagine you buy BTC at 30,000\$ with TP1 at 30,200\$, and leverage is 10x. If you wouldn't have had leverage and it hits TP1, the % profit you take is $(30,200/30,000)*100 = 0.66\%$. However, with leverage, you multiply that % by 10, so your total profit when it hits TP1 is 6.66% of your initial amount.

→ If you want to know more about leverage, we recommend that you watch this video: <https://www.youtube.com/watch?v=OUswxUrqYu0>.

5. FINAL RECOMMENDATIONS

- Crypto trading requires a high amount of patience and discipline. You should not assess your results the same day you start. Wait some weeks as you learn how to follow our signals and manage your funds correctly.
- Results are calculated just considering the Take Profit or Stop Loss level. It means they're indications, not considering a certain take profit strategy. We do it this way because not every customer manages the take profits the same way.
- If your initial inversion is low, don't assume huge risks to get bigger gains faster.
- This is a mid/long-term game, so don't expect to go from 100 do 1000\$ in one week. Instead, be disciplined and constant, and remember that your gains will compound little by little.
- Remember that these % we share are indicative and may differ between traders, depending on the trading strategy used and the risk assumed.
- If you have other questions, there's a FAQ (Frequently Asked Questions) section in our website: <https://wolfxsignals.com/faq/>
- **ENJOY YOUR PROFITS!**